



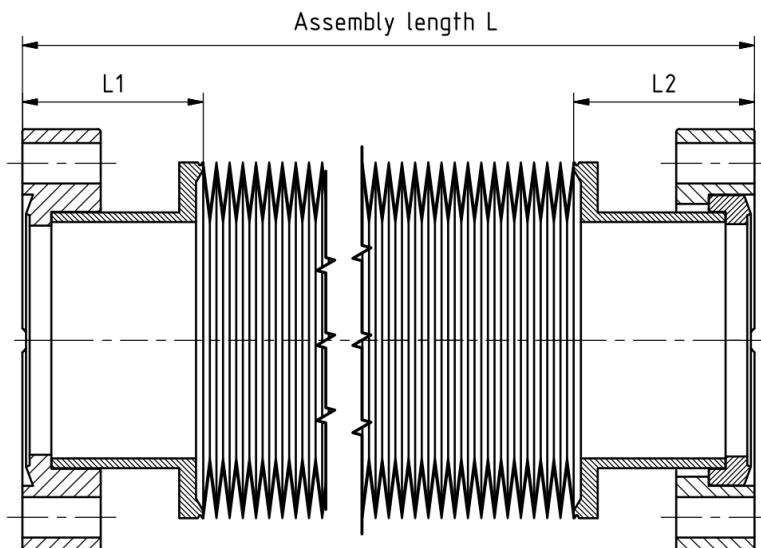
Edge welded bellow data sheet

Part name: EWB40R-10

Part number: 300564

Date: 01.11.2016

Geometric dimensions			Technical specifications		
Inner diameter	[mm]	39	Vacuum side	Inside	
Outer diameter	[mm]	59	Helium leak rate	[mbar·l/s]	1·10 ⁻⁹
Assembly length L min	[mm]	63	Operating temperature	[°C]	20
Assembly length L max	[mm]	73	Bakeout temperature	[°C]	80
Axial stroke	[mm]	10	Total weight	[g]	23
Number of convolutions		7	Spring constant axial	[N/mm]	9.3
End piece length L1	[mm]	29	Tensile force axial*	[N]	28
End piece length L2	[mm]	29	Resulting force axial**	[N]	225
Materials			* required force to pull to maximum assembly length		
Bellow	316L		** required force to hold on maximum assembly length during evacuation of the inner volume		
End pieces/ Flanges	316L / 304L		Number of cycles	10'000	



Important note:

Number of cycles is describing the maximum number of strokes during the life time. Improper installation or use of the bellows out of specifications result in a reduction of life time. Please avoid especially any torsional load and pollution with particles